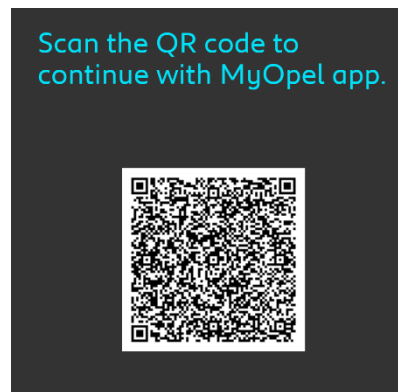


REMOTE CONTROL

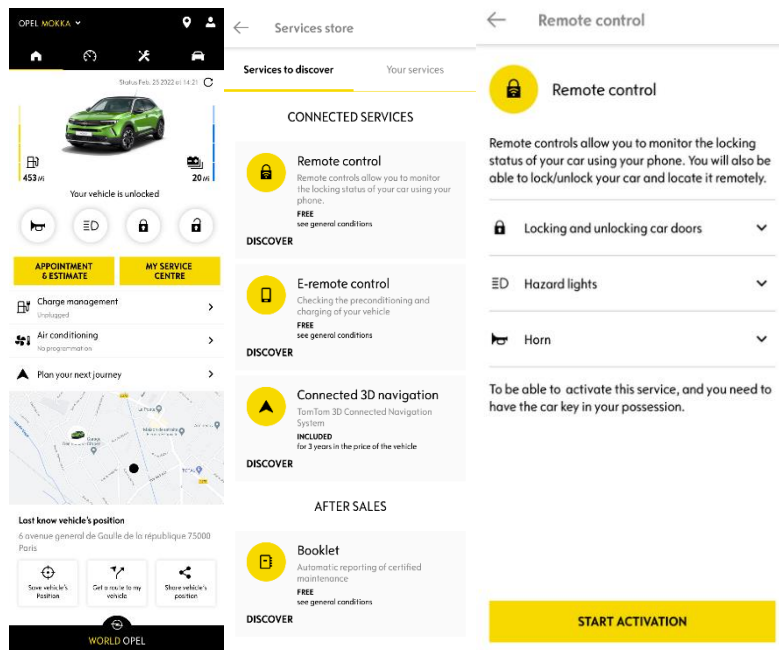
SUBSCRIPTION/ ASSOCIATION / ACTIVATION AND USAGE

This user guide will explain the path that you need to follow to activate Remote Control for your car.

First of all, to use Remote Control, you need a MyOpel account and register your car. If you haven't yet installed the mobile app on your smartphone, you can easily do it by downloading the app from Google Play Store or App Store.



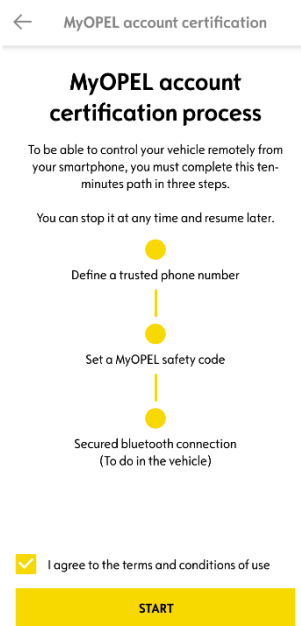
Open the MyOpel app, visit the Services store section and select “Discover” to activate Remote Control. Tap on “START ACTIVATION” and follow these few steps to activate your new service.



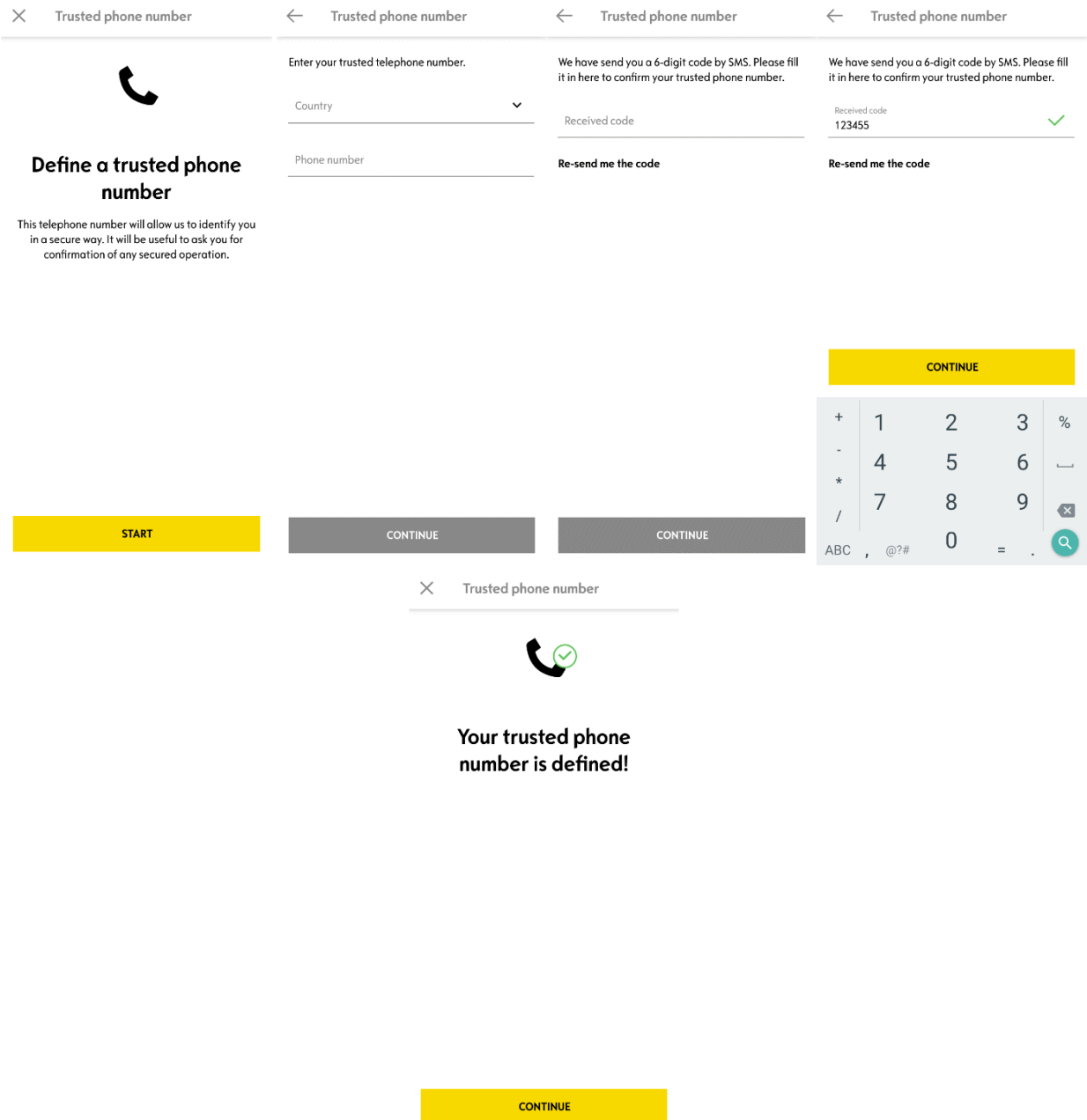
You will be redirected to the Service Activation page, in which you can read what Remote Control is and what are the benefits that you will have thanks to this service. Scroll down and tap on the “GET” button to continue activating the service.

To activate Remote Control it is important to read and accept the General Conditions and, after saving your preferences, you can start the activation process through the Mobile App, by tapping on “CONTINUE TO MYOPEL”.

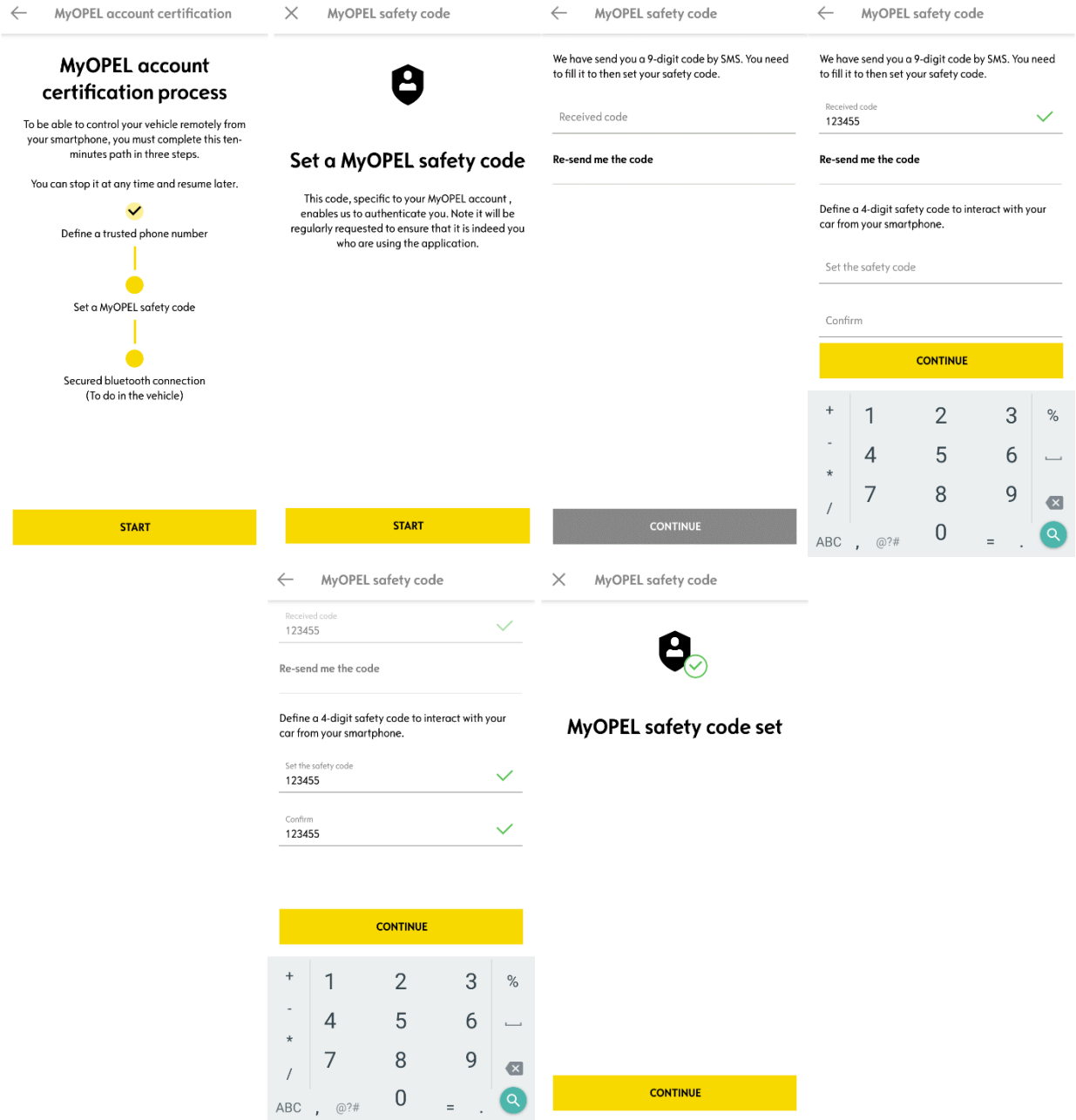
The 3 steps that you need to follow in this moment will only take a few minutes and at the end you can start to enjoy your Remote Control. At the beginning, confirm that you have already read and accepted the terms and condition, then start the activation.



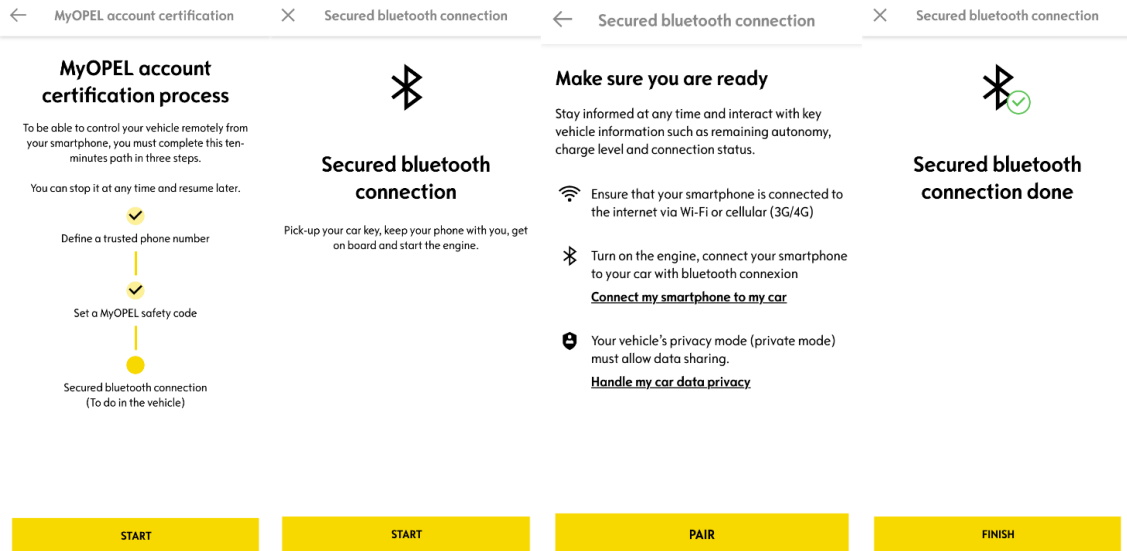
1. Enter your phone number and enter the code that you received via SMS



2. Create your personal 4-digit Safety Code. To start this step, you will receive a temporary code via SMS. First insert it to register your phone and then create your Safety Code. This code will allow you to secure remotely access to your car and to use the Remote Control features.



3. Connect your mobile phone to your vehicle using the Bluetooth. Go in your vehicle, turn on the engine, turn on the Bluetooth on your mobile phone, and click on "PAIR" to start the association.



Now the Remote Control service is active: you may be asked to update your vehicle equipment software to fully enjoy all the features and manage your car remotely

HOW TO USE YOUR REMOTE CONTROL:

Once you have activated Remote Control for your vehicle, you can control the locking status of your car, lock and unlock the doors or turn on the light and the horn in few simple steps.

To remotely control your car, you need to open myOpel app, select the icon of the command that you would like to send to your vehicle, confirm the action and wait a few seconds. Remember that ever 7 days you need to confirm the remote commands using your safety code.

